



lightswing®

style made easy



Instruction manual



Online manual including installation videos: www.lightswing.eu/manual



Introduction

How nice that you have purchased a Lightswing! As of today, you can effortlessly move, exchange and/or (temporarily) remove your pendant light. With the help of this manual we will walk you through the installation steps

Important before you get started

- ✓ The Lightswing is delivered complete and pre-assembled
- ✓ The Lightswing 90cm (Single and Twin) is suitable for pendant lights up to max. 3.5 kg each
- ✓ The Lightswing 110cm (Single and Twin) is suitable for pendant lights up to max. 2.5 kg each
- ✓ You'll be connecting the Lightswing to the mains electricity supply, so it's important to check that the power to the light point is turned off.
- ✓ The Lightswing must not be installed outside or in damp rooms.
- ✓ The Lightswing is a high-quality product that requires no maintenance.
- ✓ The warranty period is two years, as defined in our terms and conditions.

Good to know

We made several assembly videos for you to watch on YouTube.

Take a look



Privacy policy



Technical specifications

Lightswing	Single 90 cm	Single 110 cm	Twin 90 cm	Twin 110 cm
Max. volt	230 volt	230 volt	230 volt	230 volt
Connection value	400 WATT	400 WATT	600 WATT	600 WATT
Turn range	360°	360°	360°	360°
Slide range	80 cm / 31.5 inch left and right	93 cm / 36.6 inch left and right	75 cm / 29.2 inch left and right	90 cm / 35.4 inch left and right
Max. weight	3.5 kg / 7.5 lbs per pendant	2.5 kg / 5.5 lbs per pendant	3.5 kg / 7.5 lbs per pendant	2.5 kg / 5.5 lbs per pendant
Dimensions	L 90 x W 3 x H 2 cm / L 35 x W 1.2 x H 0.8 inch	L 90 x W 3 x H 2 cm L 35 x W 1.2 x H 0.8 inch	L 90 x W 3 x H 2 cm / L 35 x W 1.2 x H 0.8 inch	L 90 x W 3 x H 2 cm L 35 x W 1.2 x H 0.8 inch
Diameter base plate	12.5 cm / 4.9 inch	12.5 cm / 4.9 inch	12.5 cm / 4.9 inch	12.5 cm / 4.9 inch
Weight Lightswing	0.9 kg / 2 lbs	1 kg / 2.2 lbs	0.9 kg / 2 lbs	1 kg / 2.2 lbs
Suitable for a dimmer	Yes	Yes	Yes	Yes
Suitable for an LED-driver or transformer	No	No	No	No
Suitable for damp places	No	No	No	No
Including light source	No	No	No	No



In your package



Lightswing Single

- | | |
|----------------------|---------------------|
| 1. Lightswing | 6. Levelling foot |
| 2. Quick Release | 7. Transparent bolt |
| 3. Cover plates | 8. Screw eye |
| 4. Mounting ring | 9. Screws |
| 5. Drilling template | Mounting ring |

Lightswing Twin

- | | |
|----------------------|------------------------|
| 1. Lightswing | 6. Levelling foot 2x |
| 2. Quick Release 2x | 7. Transparent bolt 2x |
| 3. Cover plates | 8. Screw eye 2x |
| 4. Mounting ring | 9. Screws |
| 5. Drilling template | Mounting ring |



What you need



1. Socket screwdriver



2. Pencil or marker



3. Stripping pliers



4. Screws and plugs*
(NOT included)



5. Cordless drill/
screwdriver



6. Impact
drill

* We recommend fixing the mounting ring with Allen screws, with a max. head width of 7mm

Are you not using the mounting ring? Put the Lightswing fixed with countersunk screws with a max. head width of 7mm



Step 1 • Overspin protection

- Your Lightswing has an overspin protection system. This safety feature ensures that the Lightswing will lock after two full revolutions of the base plate. Rotate the base plate 360 degrees to check that it's working properly. It's best to check this before attaching the Lightswing to the ceiling
- Is the base plate immobile? Rotate the base plate back again slightly before attaching the Lightswing to the ceiling



Step 2 • Ceiling check (material)

Concrete:	When you knock on concrete it sounds massive
Wood:	When you knock on wood it sounds hollow
Plaster:	When you knock on plaster it sounds dull*
Reed:	Mostly found in old houses Unfortunately, a reed ceiling is NOT suitable for attaching a Lightswing

*NB: Do you have a plaster ceiling without support? Provide extra support if necessary and use the correct plaster plugs for attaching the Lightswing

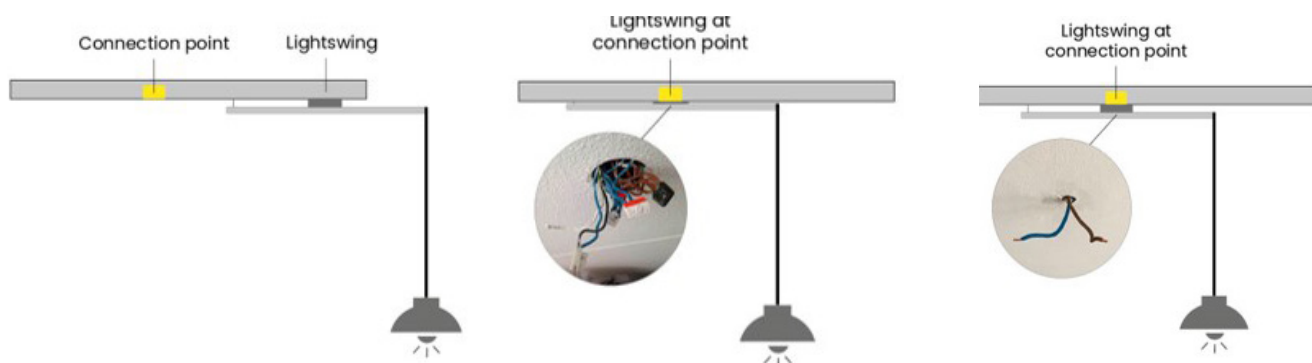
Step 3 • Determine mounting location

Determine where you want to mount the Lightswing. There are 3 options here:

A. Anywhere

B. above a distribution box

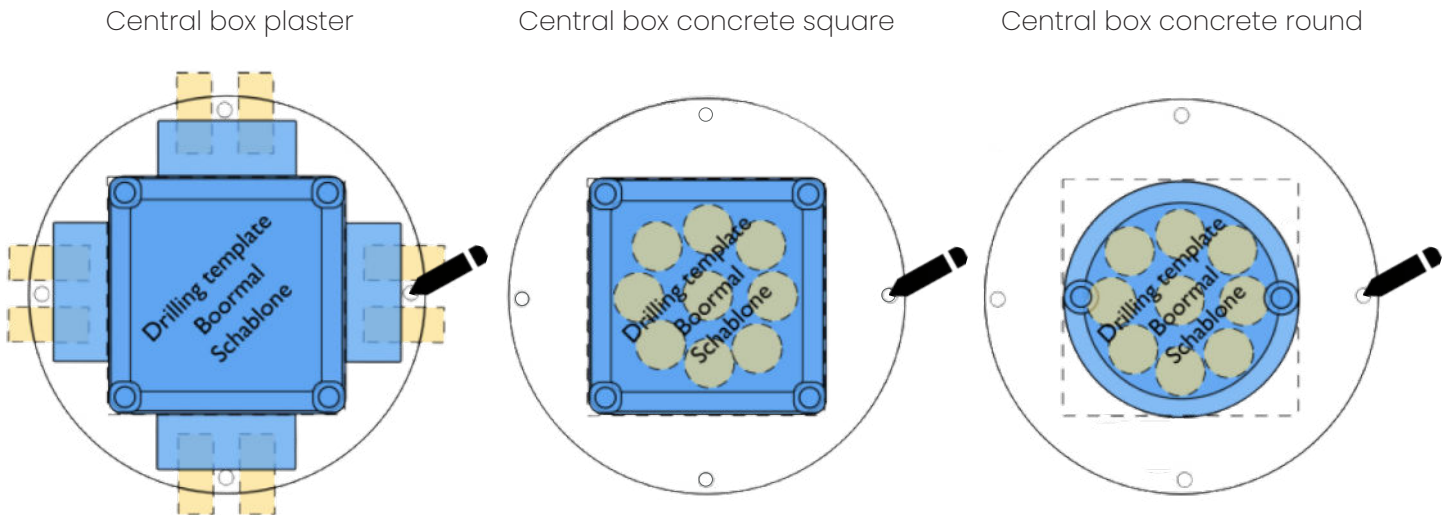
C. above a cable from the ceiling



Step 4 • Drilling holes

- **Caution:** first turn off the power to the relevant connection point
- Ensure that the mounting position can support permanent heavy weight
- Ensure that no cables can be pierced or pinched

A. Determine the position of the drill holes using the supplied drilling template and mark them



B. Drill the four marked holes in the ceiling using an impact drill. Insert concrete plugs into the drill holes and check that they are tight

Step 5 • Mounting ring

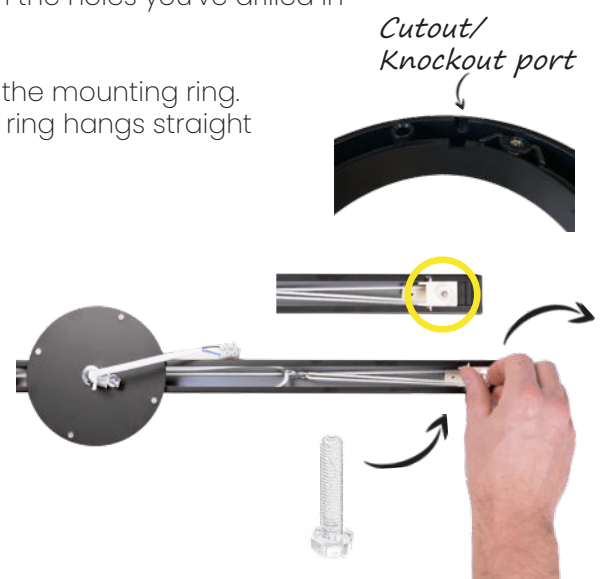
- Do you place the Lightswing over a central box? Then the mounting ring is not necessary. You can proceed to **step 6!**
- Is the Lightswing attached anywhere* or over an electrical cable? Then use the mounting ring:
 1. Position the mounting ring against the ceiling. Make sure the large holes in the mounting ring are placed over the drilled holes in the ceiling
 2. Check that no wires will be pinched
 3. Use four screws to fasten the mounting ring firmly in the holes you've drilled in the ceiling

* There is a knockout port in the mounting ring. Press it out of the mounting ring. Feed your power cable through this. This way the mounting ring hangs straight along the ceiling!

Step 5 (a) • Replacing the bolt

- Not using a mounting ring? Move on to **step 6!**
- Unscrew the short transparent bolt from the Lightswing and replace it with the longer one. You can use the levelling foot later to adjust the Lightswing correctly along the ceiling.

NB: change the bolt by hand and make sure that the bolt does not turn too far!



Step 6 · Removing Quick Release

- Slide the Quick release out of the end of the Lightswing. You can easily attach your pendant light to the Quick release. Note: Detaching the Quick release can sometimes prove a little tricky.

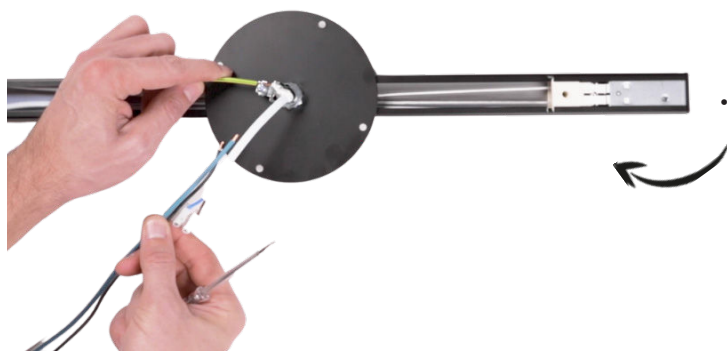
Tip: difficult to move the Quick Release in and out of the Lightswing? Carefully squeeze the sides of the Quick Release slightly inwards.



Step 7 (a) · Connecting the Lightswing

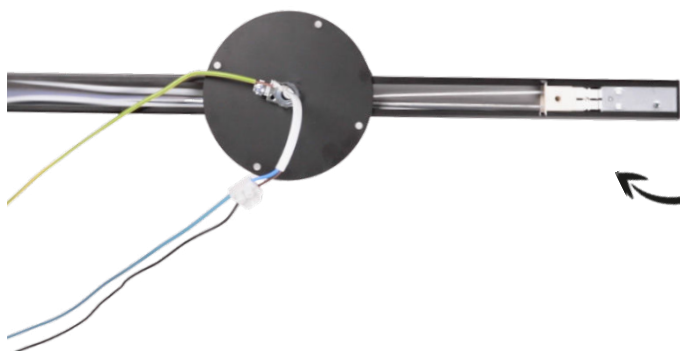
- Ensure that the power to the relevant connecting wires is turned off
- No earthing wire? Skip **step 7 (a)** and proceed directly to **step 7 (b)**

Note: the actual colours of the wires may differ from the colours shown in this manual. Be careful to ensure you are connecting the wires correctly



- Install the earthing wire (yellow/green) under the screw using a Phillips screwdriver

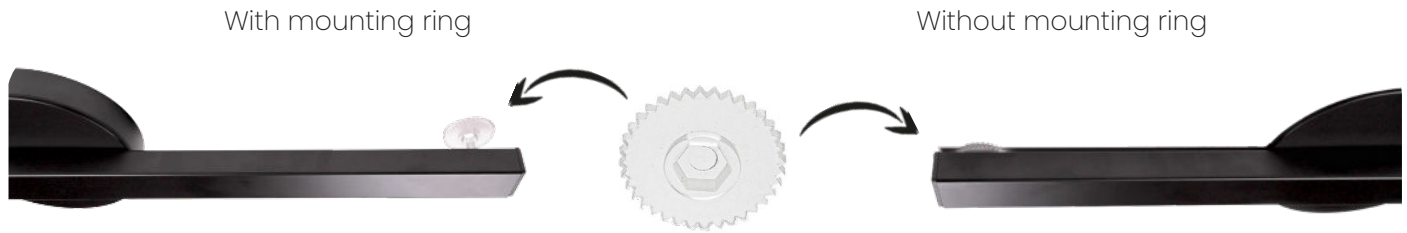
Step 7 (b) · Connecting the Lightswing



- Insert the switch wire (black) into the terminal block opposite the brown wire of the Lightswing and firmly tighten the screw of the terminal block
- Insert the neutral wire (blue) into the terminal block opposite the blue wire of the Lightswing and firmly tighten the screw of the terminal block

Step 8 · Placing leveling foot

- Place the adjustable foot in the right place between the ceiling and the Lightswing, before you attach the Lightswing to the ceiling. The bolt on which you can place the adjustable foot is located at the end of the Lightswing



Step 9 · Installing the Lightswing

- Press the connected wires into the central box or mounting ring
- Position the Lightswing against the mounting ring*, making sure the holes in the base plate of the Lightswing are placed over the small holes in the mounting ring
- Check that no wires are pinched
- Tighten the four provided screws in the holes of the mounting ring using a phillips screwdriver

*We recommend fixing the mounting ring with Allen screws, with a max. head width of 7mm. Not using the mounting ring? Then secure the Lightswing with countersunk screws, with a max. head width of 7mm



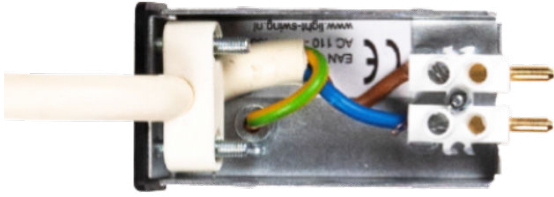
NB: make sure the screws are screwed far enough into the base plate of the Lightswing. When the screws protrude, the cover caps do not fit properly

Step 10 · Attaching the light cable to the Quick Release

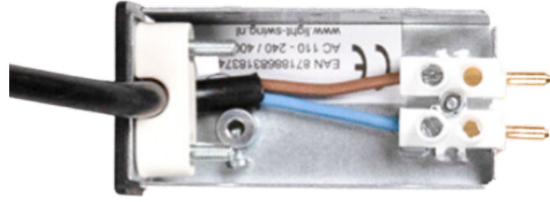
- Determine the desired height for hanging the light. Mark this on the light cable. A distance of 75 cm (29.5 inch) above the table is usually recommended
- Cut the light cable about 10 cm (3.9 inch) above the mark
- Remove the outer sheath from the cable to expose about 4 cm (1.6 inch) of the electrical wiring
- Strip the end of the wires by about 1 cm (0.4 inch) so the copper is visible
- Take the Quick Release and use a screwdriver to loosen one screw of the strain relief. Remove the other screw entirely so you can easily feed the light cable through



- Lamp cord with 3 cores: connect as the picture below



- Lamp cord with 2 cores: connect as the picture below



- Tighten the strain relief after inserting the cable.

NB: make sure the wires are far enough into the terminal block that the copper wiring can no longer be seen.

Step 10(a) • Screw eye

- Is your light connected to a steel wire or chain as well as a cable?
Yes: Attach the screw eye to the Quick Release as described below
No: Proceed to **step 11**
1. Take the Quick release and remove one screw from the strain relief using a screwdriver
 2. Fasten the screw eye in place of the screw from the strain relief.



Step 11 • Replacing the Quick Release

- Now that you have attached the light to the Quick Release, it can be put back in the Lightswing

Step 12 • Adjusting the Lightswing

- The levelling foot can be used to adjust the Lightswing so it sits parallel to the ceiling and has more support. Place the transparent levelling foot over the transparent bolt of the Lightswing. Turn the levelling foot until the Lightswing is straight.

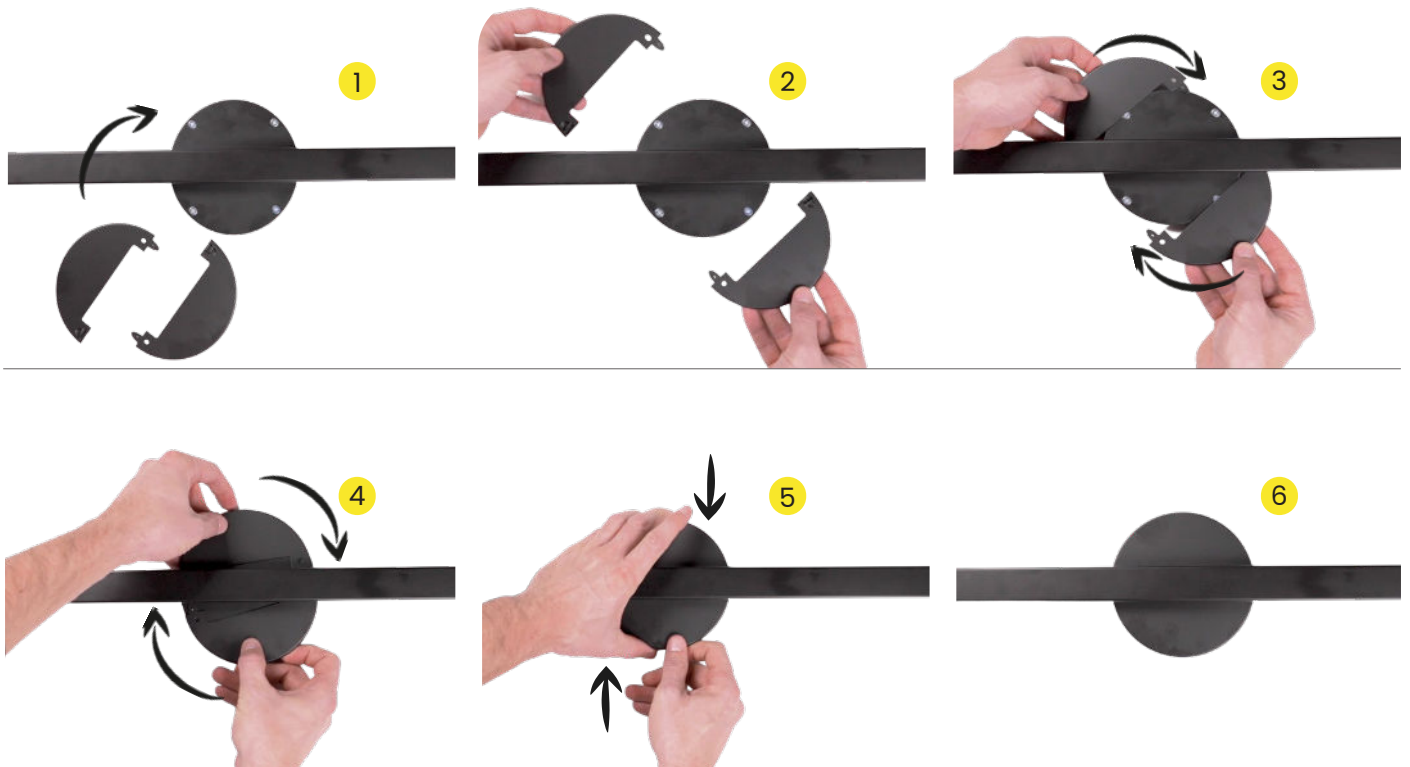


Step 13 • Positioning the cover plates

- Now that the Lightswing and light are in the correct position, you can put the cover plates on to hide the screws

NB: it is important that the Lightswing hangs straight along the ceiling before you place the cover caps. Check again whether the screws with which the Lightswing is attached are deep enough in the recesses

1. Position the cover plates with the ridges in the open area of the Lightswing
2. Slide the plates over the Lightswing
3. Rotate the plates slightly inwards
4. Rotate and slide the plates in further
5. Press the plates against each other until they click together
6. That's it!



Repositioning your Lightswing

- Always take care when sliding/rotating the Lightswing to the desired position
- Be sure that no moving parts can scrape against the ceiling
- Don't forget to raise the levelling foot slightly when you want to slide or rotate the Lightswing

Share the result

We are very curious to see the result and would love it if you would share a photo or video with hashtag **#lightswing**